

**Punctuality and routine:** It is really important that children get into good time keeping and routine habits from an early age. The school continues this term to have a soft start and children can arrive between 8:45 and 9am. However, any later and it can effect your child's learning for the rest of the day.

### Reminders

#### **PE is every Tuesday and Friday**

Please ensure your child brings a complete change of clothes including suitable sports shoes.



#### Homework and Reading books:

Both homework and reading books are due in on a **Wednesday** and will be given out every **Friday**. This will include spellings, maths and writing homework. As already mentioned, it is important your child continues to read something every day at home for at least 20 minutes.



We thank you for all your continued support  
Miss Coyne and the Year 1 team .



Colvestone Primary School

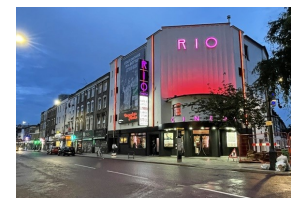
Colvestone Crescent, London, E8 2LG

Headteacher: **Anna Lucey**

T: 020 7254 1143, Fax: 020 7249 7576

Email: [office@colvestone.hackney.sch.uk](mailto:office@colvestone.hackney.sch.uk)

## Colvestone Primary School



## Hackney, Our Home

Summer Term 2024

Year 1

**Miss Amy Coyne**

**Miss Lisa Wakefield**

Our curriculum theme for the whole school this term is **Hackney, Our Home**. We will continue to make cross curricular links with all areas. In Year 1, we will focus on the local area Dalston, exploring it both in the past and present and looking at significant people who lived in Dalston, specifically notable women, key landmarks, as well as identifying and discussing what Hackney means to us. We will also be exploring the geography of Dalston, going on local walks and creating maps for others to use and follow.

### **Personal, Social and Emotional Development (PSED).**

This term, we will be focusing on our health and well being. In the first term, we will be learning about ways to keep both our bodies and minds healthy, identifying signs that trigger our health as well as strategies to help. In the second half term, we will be thinking about change and growth. We will be discussing how it is a natural part of life that everyone experiences, both by reflecting on our own life changes and our goals for the future.

### **Communication, Language and Literacy Development (CLLD)**

**Reading** - Daily Supported Reading (D.S.R.) will continue to happen four mornings a week. During this session, the children's reading ability will progress through a daily session that teaches and develops early reading skills. **Please also continue to develop your child's reading journey at home by reading with them for at least 20 minutes a day.** Also this term, the children will take part in a practice phonics screening in order to further assess and support your child's phonics understanding. This in turn will greatly help to develop your child reading and writing abilities. The children must continue to practice recognising their sounds and reading a range of both real and 'alien' words for a certain amount of time each day, both at school and home.

**Writing** - Children will continue to develop their ability to write different sentences such as simple, extended, questions and exclamation sentences in a range of writing genre opportunities such as writing a narrative about the gunpowder plot and adverts, persuading girls to follow their career opportunities. The children will continue to also further develop their understanding of demarcating their writing with capital letters and full stops as well as their ability to form letters correctly during handwriting sessions.

### **Problem Solving and Reasoning about Numbers (PSRN)**

**Number**—In Numeracy, we will be developing our understanding of counting in different ways to apply to our understanding of multiplication. We will also begin to learn about fractions and how we apply our understanding of halves and quarters for example in our day to day living. The children's learning will also be extended through reasoning questions and developing their ability to 'explain' their reasoning for problem solving.

**Shape, Space and Measure** - We will learn how to recognise, count and add with coins. We will also learn how to recognise and make o'clock and half past times on an analogue clock.

### **Science**

In Science this term, Year 1 will be learning about materials and their properties. We will carry out scientific enquiries and investigations and develop our knowledge and ability to use scientific language to describe the findings of our investigations

### **Geography**

In Geography this term, we will be learning in detail about Dalston, focusing on different routes of the area, physical and human features such as parks and key landmarks and ways that we can improve the area.

### **Religious Education (RE)**

This term, to make cross curricular links with our whole school 'buildings' topic, we will be learning about different places of worship and doing some virtual tours around a range of religious buildings and exploring the following question: How and why do special places and symbols help people show what they believe?

### **Physical Education (PE)**

In P.E. the children will develop and extend their sending and receiving skills when throwing a ball. They will learn to work more co-operatively in small groups, including understanding how to develop small group tactics when playing team games.

### **Art**

In Art this term, we will be learning to use drawing, painting, printing and sculpture to develop and share ideas, interests and interpretations related to our own relationship as well as others to Hackney, our home and community.

